



WAIKATO/BOP MASTERS ATHLETICS ASSOC

# Trophy Day - Records

Updated: 23 February 2018



2018 New Best performances are highlighted in blue

100m:

M30:					W30:	N Buchanan	13.90			2001
M35:	S Te Whaiti	11.90		2001	W35:					
M40:	M Foster	11.50	89.8%	2017	W40:	B Scott	13.70			2001
M45:	B Magill	15.40		2012	W45:					
M50:	B Solomon	12.10	90.7%	2013	W50:	S Gower	14.40			2001
M55:	S Burden & <b>B Solomon</b>	<b>12.50</b>	<b>90.7%</b>	2015 & <b>2018</b>	W55:	S Gower	13.80	92.5%		2006
M60:	R White	13.70	86.2%	2006	W60:	M Double	17.40			2001
M65:	S Foster	14.40		2003	W65:	S Gower	15.30	94.4%		2015
M70:	J Lester	16.00	80.5%	2016	<b>W70:</b>	<b>S Gower</b>	<b>16.30</b>	<b>90.9%</b>		<b>2018</b>
M75:	L Williams	18.80		2012	<b>W75:</b>	<b>J Sherburn</b>	<b>20</b>	<b>81.2%</b>		<b>2018</b>
M80:					W80:					
<b>M85:</b>	<b>H Mein</b>	<b>25.6</b>	<b>62.8%</b>	<b>2018</b>	W85:	M Petley	23.60	82.6%		2014
<b>M95:</b>	<b>E de Lautour</b>	<b>35.4</b>	<b>70.5%</b>	<b>2018</b>						



Stephen Te Whaiti



Les Williams - 2012



Stu Foster



Sheryl Gower



Marcia Petley - 2009

200m:

M30:					W30:	N Buchanan	28.80			2001
<b>M35:</b>	<b>S Te Whaiti &amp; G MacKenzie</b>	<b>24.20</b>	<b>84.1%</b>	2001 & <b>2018</b>	W35:					
M40:	M Foster	24.20	86.7%	2017	W40:	B Scott	29.40			2001
M45:	C Sinclair	30.30	72.4%	2017	W45:	J Lile	30.0	80%		2017
M50:	B Solomon	25.30	88.6%	2013	W50:	S Gower	30.10			2001
<b>M55:</b>	<b>B Solomon</b>	<b>25.50</b>	<b>91.4%</b>	<b>2018</b>	W55:	S Gower	29.70			2003
M60:	B Clarke	34.20		2001	W60:	M Double	36.30			2001
M65:	S Foster	29.00		2003	W65:	S Gower	33.10	91.5%		2015
M70:	J Lester	33.60	80.4%	2016	<b>W70:</b>	<b>S Gower</b>	<b>35.60</b>	<b>87.5%</b>		<b>2018</b>
M75:	B Clarke	40.60	69.9%	2014	<b>W75:</b>	<b>J Mayall</b>	<b>45.7</b>	<b>73%</b>		<b>2018</b>
M80:					W80:					
<b>M95:</b>	<b>E de Latour</b>	<b>73.90</b>	<b>80.7%</b>	<b>2018</b>	W85:	M Petley	50.90	82.5%		2014

400m:

M35:	I Clarke	01:04.7		2005	W35:	S Hatherill	01:09.3			2003
M40:	C Wilson & S Te Whaiti	56.10		2003 & 2005	W40:					
M45:	B Carswell	57.40		2005	W45:					
M50:	B Solomon	56.40	87.8%	2013	W50:	L Harris	01:12.5			2003
M55:	M Clarkson	01:02.4		2005	W55:	S Gower	01:10.8			2003
M60:					W60:	J Chandler	01:22.1			2001
M65:	S Foster	01:09.3		2003	W65:	S Gower	01:24.5	80.0%		2014
M70:	H Mein	01:22.6		2001	<b>W70:</b>	<b>S Gower</b>	<b>01:34.5</b>	<b>76.2%</b>		<b>2018</b>
M75:					W75:	J Mayall	01:53.6	71.3%		2017
<b>M95:</b>	<b>E de Latour</b>	<b>03:25.3</b>	<b>73.1%</b>	<b>2018</b>						



Bruce Solomon      Craig Wilson      Stephen Burden      Julia Lile      Judy Chandler

800m

M30:					W30:	L Wells	02:52.2	65.8%	2014
M35:	B Magill	02:23.2		2003	W35:	S Hatherill	02:38.0		2003
M40:	B Magill	02:24.0		2012	W40:	S Hatherill	02:42.0		2005
M45:	C Sinclair	02:24.0	78.0%	2016	W45:	L Harris	02:57.0		2001
M50:	M Clarkson	02:16.6		2001	W50:	L Harris	02:43.0		2003
M55:	M Clarkson	02:19.6		2003	W55:	F Riley	03:05.7		2001
M60:	M Clarkson	02:45.4		2012	W60:				
M65:	D Litt	02:29.0	88.1%	2017	W65:				
M70:	B Smith	03:35.2		2003	W70:	J Mayall	03:58.5	78.5%	2014
M75:					W75:	J Mayall	04:20.0	77.8%	2017
M80:					W80:				

1,500m

M35:					W35:				
M40:	M Henderson	06:21.3		2003	W40:	K McCready	05:48.5		2012
M45:	C Sinclair	05:33.2	69.7%	2016	W45:				
M50:	M Clarkson	04:49.1		1999	W50:				
M55:	M Clarkson	05:07.4		2003	W55:				
M60:	J McCutcheon	06:31.2		2003	W60:				
M65:	D Litt	05:10.1	88.1%	2017	W65:				
M70:					W70:				
M75:					W75:				
M80:	H Mein	10:27.0	58.3%	2015	W80:				
M85:					W85:				



Dennis Litt      Murray Clarkson      Craig Sinclair      Theresa Large      Karyn McCready      Fay Riley

3,000m

M35:					W35:	C Bartrum	12:30.5	68%	2018
M40:	W Davis	14:28.0		2005	W40:	K McCready	11:59.7		2012
M45:					W45:				
M50:					W50:	R Winter	14:55.4		2001
M55:	R McPherson	11:32.5		2001	W55:				
M60:	N Fleming	12:33.0		2001	W60:	J Fleming	15:19.7		2001
M65:	D Litt	10:43.0		2017	W65:				
M70:					W70:				
M75:	S Gawler	13:59.0		2002	W75:				

3,000m Track Walk

M35:					W35:				
M40:					W40:				
M45:					W45:				
M50:					W50:	S Miritana	20:07.6		2001
M55:	M Gray	18:31.2	69.2%	2018	W55:	T Large	18:44.0		2012
M60:					W60:	T Large	20:03.6	73.3%	2018
					W65:	S Miratana	22:19.0	69.1%	2016

### Hurdles 110m

M35:				
M40:	P Ranginui	18.70		2012
M45:				

### Hurdles 100m

M50:	P Daborn	16.20	86.2%	2017
M70:	A Silvester	20.30	66.7%	2016



Brendan Magill



Peter Ranginui



Paul Daborn



Tania Hodges

### High Jump

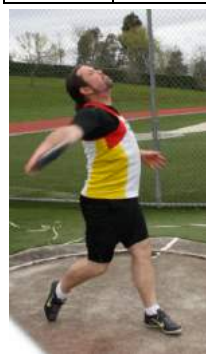
M35:	S Te Whaiti	1.65		2001	W30:	L Wells	1.30	63.1%	2014
M40:	S Te Whaiti	1.60		2005	W35:				
M45:	D Hamilton & G Boyd	1.55	74.2%	2012 & 2018	W40:				
M50:	S Te Whaiti	1.52	78.4%	2017	W45:				
M55:	B Solomon	1.43	75.7%	2018	W50:				
M60:	B Clarke	1.15		2001	W55:				
M65:	L Williams	1.15		2003	W60:	M Clarke	1.00		2001
M70:	H Mein	1.15		2001	W65:				
M75:	H Mein	1.20		2006	W70:				
M80:	H Mein	0.90	70.9%	2015	W75:				
M85:	H Mein	0.88	73.9%	2018	W80:				

### Triple Jump

M35:					W30:	N Buchanan	9.01		2001
M40:	M Foster	11.23	66.6%	2017	W40:				
M45:	A Jack	9.09	56.6%	2018	W45:				
M50:	S Burden	11.32		2012	W50:				
M55:	S Burden	10.89	79.7%	2017	W55:				
M60:	B Clarke	7.98		2001	W60:				
M65:	L Williams	8.86		2003	W65:				
M70:					W70:	A Acott	5.16		2001
M75:	L Williams	6.60		2012	W75:				
M80:	H Mein	4.39	53.2%	2015	W80:				

### Shot Put

M30:					W30:				
M35:	D Couper	9.91	43.8%	2016	W35:				
M40:	D Couper	10.30	46.5%	2018	W40:	B Scott	8.12		2001
M45:	D Hamilton	8.85		2012	W45:				
M50:	D Hamilton	10.43	51.7%	2014	W50:	T Hodges	10.49	66.6%	2017
M55:	M Clarkson	5.78		2005	W55:	S Gower	6.70		2003
M60:	J Kirkland	9.33		2001	W60:	T Large	6.67	51.6%	2018
M65:	B Mayall	7.21		2005	W65:	S Gower	6.68	56.7%	2014
M70:	P Crawford	11.36	65.7%	2015	W70:	A Parlane	6.81	65.6%	2018
M75:					W75:	J Sherburn	6.93	79.8%	2018
M80:					W80:				
M95:	E de Latour	1.95	40.3%	2018	W85:	P Purser	3.98		2012



David Couper



Brendan Magill



Hector Mein



Bryan Mayall



Jill Sherburn



Brenda Davis



Discus

M35:	D Couper	23.62	31.9%	2014	W35:				
M40:	D Couper	30.70	41.4%	2017	W40:	C McCahill	35.32		2008
<b>M45:</b>	<b>I Clarke</b>	<b>28.37</b>	<b>41.8%</b>	<b>2018</b>	<b>W45:</b>	<b>B Davis</b>	<b>26.91</b>	<b>44.2%</b>	<b>2018</b>
M50:	B Solomon	34.36	47.2%	2014	W50:	B Savage	31.59		1999
M55:					W55:	T Large	16.92	32.9%	2014
M60:					W60:	T Large	14.92	30.9%	23.74
M65:	M Clarkson	15.44	26.7%	2014	W65:	B Savage	21.70	54.5%	2014
M70:	P Crawford	33.33	65.2%	2015	<b>W70:</b>	<b>A Parlane</b>	<b>18.7</b>	<b>51.1%</b>	<b>2018</b>
M75:	B Clarke	20.26	45.7%	2014	W75:	J Sherburn	14.92	47.6%	2017
M80:	R Laurie	16.16	41.5%	2015	W80:				
M85:					W85:	M Petley	9.53	39.0%	2015
M90:					W90:	P Purser	8.16	44.7%	2014

Javelin

M35:	D Couper	45.24	51.0%	2016	W35:				
<b>M40:</b>	<b>D Couper</b>	<b>46.30</b>	<b>53.9%</b>	<b>2018</b>	W40:	B Davis	22.13		2012
M45:	I Clarke	36.78	45.9%	2016	<b>W45:</b>	<b>B Davis</b>	<b>21.34</b>	<b>40%</b>	<b>2018</b>
M50:	S Te Whaiti	41.54	57.0%	2017	W50:	A Harris	20.01		2001
<b>M55:</b>	<b>B Solomon</b>	<b>34.23</b>	<b>48.9%</b>	<b>2018</b>	W55:				
M60:	R Laurie	22.39		1999	W60:	J Sherburn	15.53		2006
M65:	B Mayall	17.52		2005	W65:	J Jacobs	14.70		1999
M70:	P Crawford	29.37	53.5%	2015	W70:	J Sherburn	13.78		2012
M75:					W75:	J Sherburn	14.86	54.1%	2017
M80:	H Mein	17.11	43.1%	2015	W80:				
<b>M85:</b>	<b>H Mein</b>	<b>12.67</b>	<b>37.7%</b>	<b>2018</b>	W85:				
M90:					W90:	P Purser	7.68	54.9%	2014

Hammer

M35:	D Couper	34.47	40.9%	2014	W35:				
M40:	D Couper	35.35	44.0%	2017	W40:	C McCahill	41.66		2008
<b>M45:</b>	<b>I Clarke</b>	<b>26.29</b>	<b>37.4%</b>	<b>2018</b>	W45:	B Davis	34.65	73%	2017
M50:	K Bradley	41.21		2005	W50:	B Savage	40.39		1999
<b>M55:</b>	<b>N Tait</b>	<b>26.46</b>	<b>40.6%</b>	<b>2018</b>	W55:	T Large	20.06		2012
M60:	K Bradley	24.95		2001	W60:	M Clarke	21.79		2003
M65:	B Clarke	24.66		2005	W65:	B Savage	29.59	71.1%	2014
M70:	B Clarke	27.65		2012	<b>W70:</b>	<b>B Savage</b>	<b>26.39</b>	<b>71.0%</b>	<b>2018</b>
M75:	B Clarke	25.94	58.0%	2014	W75:	M Clarke	20.30	60.0%	2016
M80:	R Laurie	23.89	61.7%	2015	W80:				
M85:					W85:	M Petley	16.46	76.2%	2015
M90:					W90:	P Purser	12.09	75.3%	2014



David Couper



Ian Clarke



Bruce Clarke



Marion Clarke



Pauline Purser

Weight Throw

M35:	D Couper	11.76	49.1%	2016	W40:	C McCahill	14.6		2008
<b>M40:</b>	<b>D Couper</b>	<b>10.88</b>	<b>46.7%</b>	<b>2018</b>	W45:	B Davis	12.35	85.1%	2017
M50:					<b>W50:</b>	<b>T Hodges</b>	<b>12.4</b>	<b>68.8%</b>	<b>2018</b>
<b>M55:</b>	<b>N Tait</b>	<b>10.37</b>	<b>49.4%</b>	<b>2018</b>	W55:	T Large	8.72	52.3%	2014
M60:					<b>W60:</b>	<b>T Large</b>	<b>8.6</b>	<b>48.6%</b>	<b>2018</b>
M65:					W65:	B Savage	11.19	73.2%	2014
M70:	B Clarke	11.16		2012	<b>W70:</b>	<b>B Savage</b>	<b>10.66</b>	<b>78.0%</b>	<b>2018</b>
M75:	B Clarke	9.98	58.5%	2014	<b>W75:</b>	<b>J Sherburn</b>	<b>7.79</b>	<b>67.0%</b>	<b>2018</b>
M80:	R Laurie	9.59	58.3%	2015	W80:				
<b>M85:</b>	<b>H Mein</b>	<b>7.52</b>	<b>58.6%</b>	<b>2018</b>	W85:	M Petley	7.14	89.5%	2015
					W90:	P Purser	4.84		2012



Murray Clarkson



Ray Laurie



Bev Savage



Marcia Petley

Longest Standing Records

Track				Track				
M50:	M Clarkson	04:49.1	1,500m	1999				
Field				Field				
M60:	R Laurie	22.39	Javelin	1999	W70:	M Petley	2.63 Long Jump	1999
					W50:	B Savage	31.59 Discus	1999
Throws Pentathlon					W65:	J Jacobs	14.7 Javelin	1999
					W50:	B Savage	40.39 Hammer	1999

These records are available on the following websites:

WBOP [www.athleticswaikato Bay of Plenty.org.nz](http://www.athleticswaikato Bay of Plenty.org.nz)

Contact for record updates:

Bruce Solomon  
 25 Ventura Key  
 Papamoa, 3118  
[bruce@bopkids.co.nz](mailto:bruce@bopkids.co.nz)